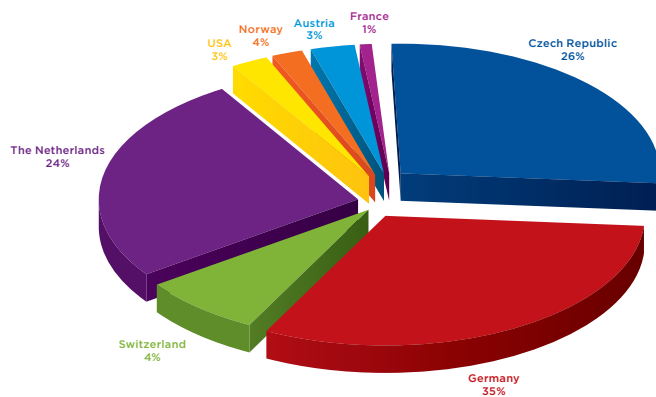


The company GENICZECH-M spol. s r.o. offers custom production of machined parts according to the supplied drawings, including construction units and machine assemblies, surface finishes and transport to the customers.

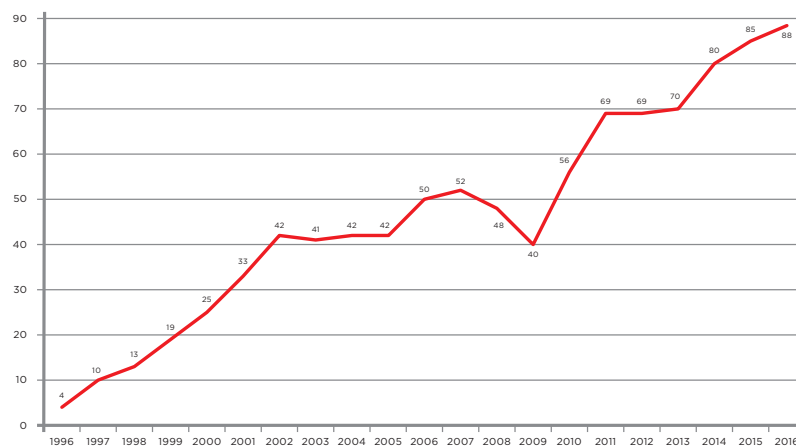
## About us

- 1993** - founding of company Geniczech-M, spol. s r.o. which is currently being run by the family
- 1993–1995** - manufacturing of machinery parts for a strategic foreign partner and increasing our production capacity including building up a stronger team of engineering professionals
- 1998** - significant modernization of production plant thanks to purchase of CNC machine tool
- 1999** - audit by foreign business partner Philips
- 2003** - obtaining of the ISO 9001 certificate: Quality management system  
- purchase of our own production building, where is concentrated complex production including material supervising and dispatch of our products
- 2005** - Implementation of new technologies and CNC machine tools enabling the production of high precision rotating parts and mainly cabinet parts in case of working in 5 axes  
- purchase 3D measuring machine including software for the design and programming CAD-CAM
- 2009** - completion of the first phase of reconstruction of production areas in order to optimize the process flow  
- by reconstruction of the building were created new administrative areas that are rented  
- the company strengthened its position in customer companies regarding quality and delivery terms
- 2011** - expansion of production areas and getting additional capacity not only for production of parts, but also for other assemblies of machine groups  
- stabilization of professional CNC operators
- 2012** - purchase of new CNC machines with wider range of machine surfaces and achieving higher accuracy
- 2013** - completion of a training centre and a complete reconstruction of the building 53/2  
- purchase of three modern machining centers  
- implementation of the "Educate for Grow" project, upgrade qualification of our employees, owner of the company was awarded Entrepreneur of the Zlín Region
- 2014** - purchasing of portal center  
- effort to promote engineering as part of the event „Engineering perspective for young people“  
- General partner of the exhibition of significant Zlín native architect Eva Jiříčná
- 2015** - obtaining of grant program within the project „Development“ and purchasing of new technologies for CNC machining with bigger range and precision of machining surfaces
- 2016** - modernization of old conventional machines  
- expanding of cooperation with technical schools in the region
- 2017** - extension of building 54 expansion of storage and manufacturing space  
- stabilization of production portfolio, obtaining of serial and repeatable work from existing customers

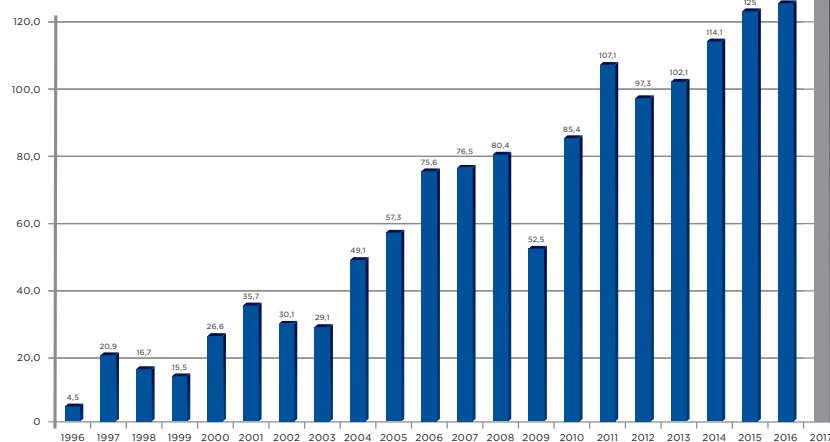
## The territorial distribution of sales by countries - year 2016



## Number of employees



## Net sales in millions of crowns



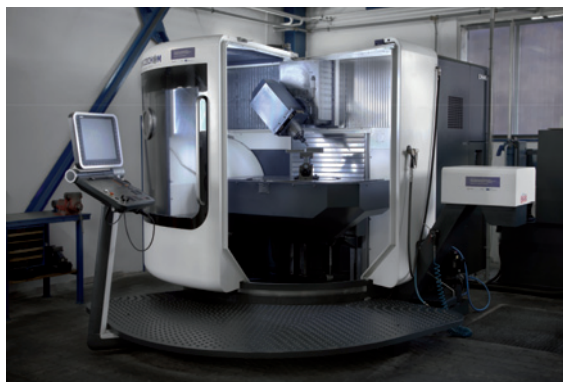
## Machining of surfaces and CNC cabinet parts

### Machining in five-axis



**GROB G550**

x = 800 mm · y = 1020 mm · z = 1020 mm



**DECKEL MAHO DMU 100**

x = 1150 mm · y = 710 mm · z = 710 mm



**DECKEL MAHO DMU 80mono BLOCK**

x = 880 mm · y = 630 mm · z = 630 mm



**DECKEL MAHO DMU 60 T**

x = 630 mm · y = 560 mm · z = 560 mm



**Portal center MT1932**

x = 3200 mm · y = 1900 mm · z = 800 mm

### Machining in four-axis



**HAAS Automation - ES -5-4AX**  
x = 1016 mm · y = 457 mm · z = 558 mm



**Horizontal boring machine - WH 10 CNC**  
Table 1000 x 1120mm with rotation  
Travels (X = 1250mm, Y = 1000mm, Z = 900mm)

### Machining in three-axis



**HAAS VF-6**  
x = 1626 mm · y = 813 mm · z = 762 mm



**Vertical milling center KAFO VMC-1688**  
x = 1600 mm · y = 880 mm · z = 700 mm



**HAAS VF-5**  
x = 1270 mm · y = 660 mm · z = 635 mm



**Vertical milling center MCFV 1050**  
x = 1020 mm · y = 510 mm · z = 525 mm

### Machining in three-axis



**HAAS VF-2**  
x = 762 mm · y = 406 mm · z = 508 mm



**CNC milling machine FV 30**  
x = 760 mm · y = 380 mm · z = 152 mm

### Machining of rotating parts



**Lathe GOODWAY GS-4000**  
d = 620 mm · l = 600 mm



**Lathe GOODWAY GA-2600**  
d = 606 mm · l = 530 mm

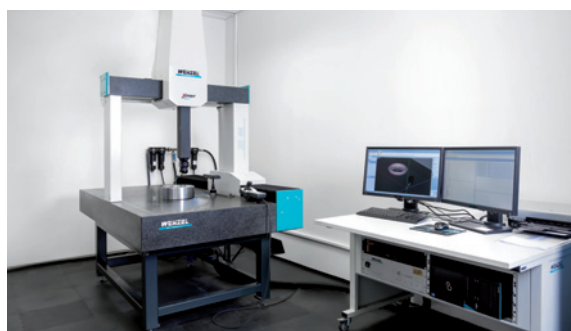


**Lathe MAHO GRAZIANO GR 400 E**  
d = 280 mm · l = 400 mm



**Lathe S 50 CNC**  
d = 270 mm · l = 535 mm

## Measuring instruments



**CMC coordinate measuring instrument  
WENZEL X055 (1pc)**

x = 1000 mm · y = 500 mm · z = 500 mm



**Linear digital altimeter  
Mitutoyo LH600 - 2D (3pc)**

x = 237 mm · y = 448 mm · z = 1013 mm

## Conventional machines - milling, turning, grinding, drilling

### Machining

#### Conventional lathes (4 pcs)

Max. turning diameter 700mm  
Turning length 1500mm  
(SV18, SUI40, Turnádo 1500V)

#### Conventional milling machines (8pcs)

Max. table 1800 x 630mm  
(FGU 32, FNK 25, F2V, FGSH)

### Drilling machines

#### Four-spindle V20/4 (2pcs)

Table 280 x 355mm  
Max. diameter 200mm  
Max. depth 160mm

#### Radial VR50 (1pc)

Table 500 x 630mm  
Max. diameter 50mm  
Max. depth 1270mm

### Grinding machines

#### Surface BPH 320a (2pcs)

Table 1000 x 300mm  
Max. height of part 250mm

#### Round BUAJ 28 (1pc)

Max. length 630mm  
Max. diameter 280mm

#### Internal 2UD HS (1pc)

Max. length 630mm  
Max. diameter 280mm

### Saw machines

#### Two-column automatic band saw PEGAS 400 PRO A CNC horizontal (1pc)

Table 1000 x 300mm  
Max. height of part 250mm

#### Manual band saw PEGAS 180 MANUAL STANDARD horizontal (1pc)

Max. diameter 180mm

#### Circular IMET SIRIO 370 (1pc)

Max. diameter 120mm  
Max. rectangular profiles 180 x 100mm

#### Vertical band saw SIGMAKOL SKV (1pc)

Table 775 x 550mm  
Cutting height 180mm

### Welding machines

#### KEMPPI PROMIC 530 (1pc)

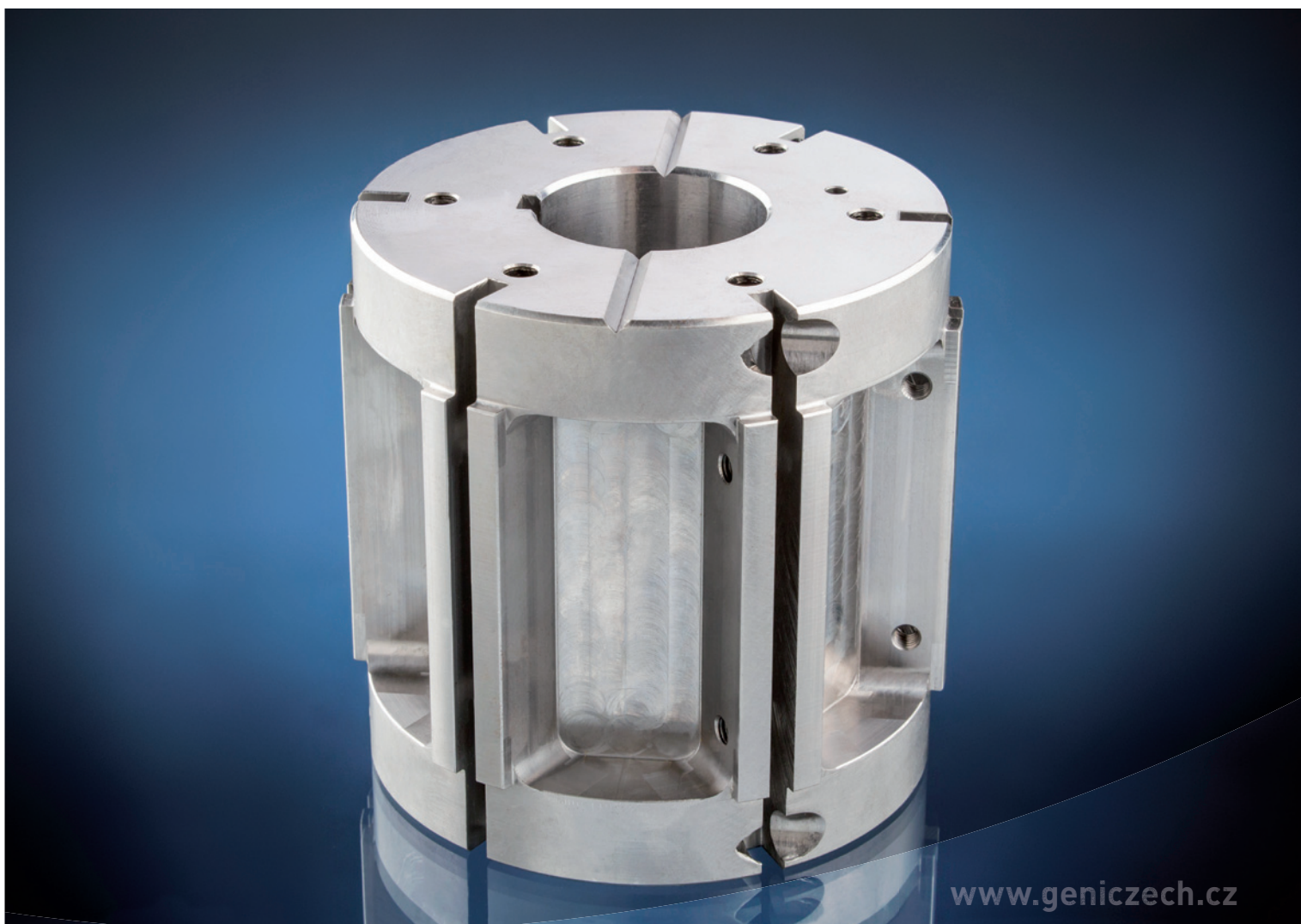
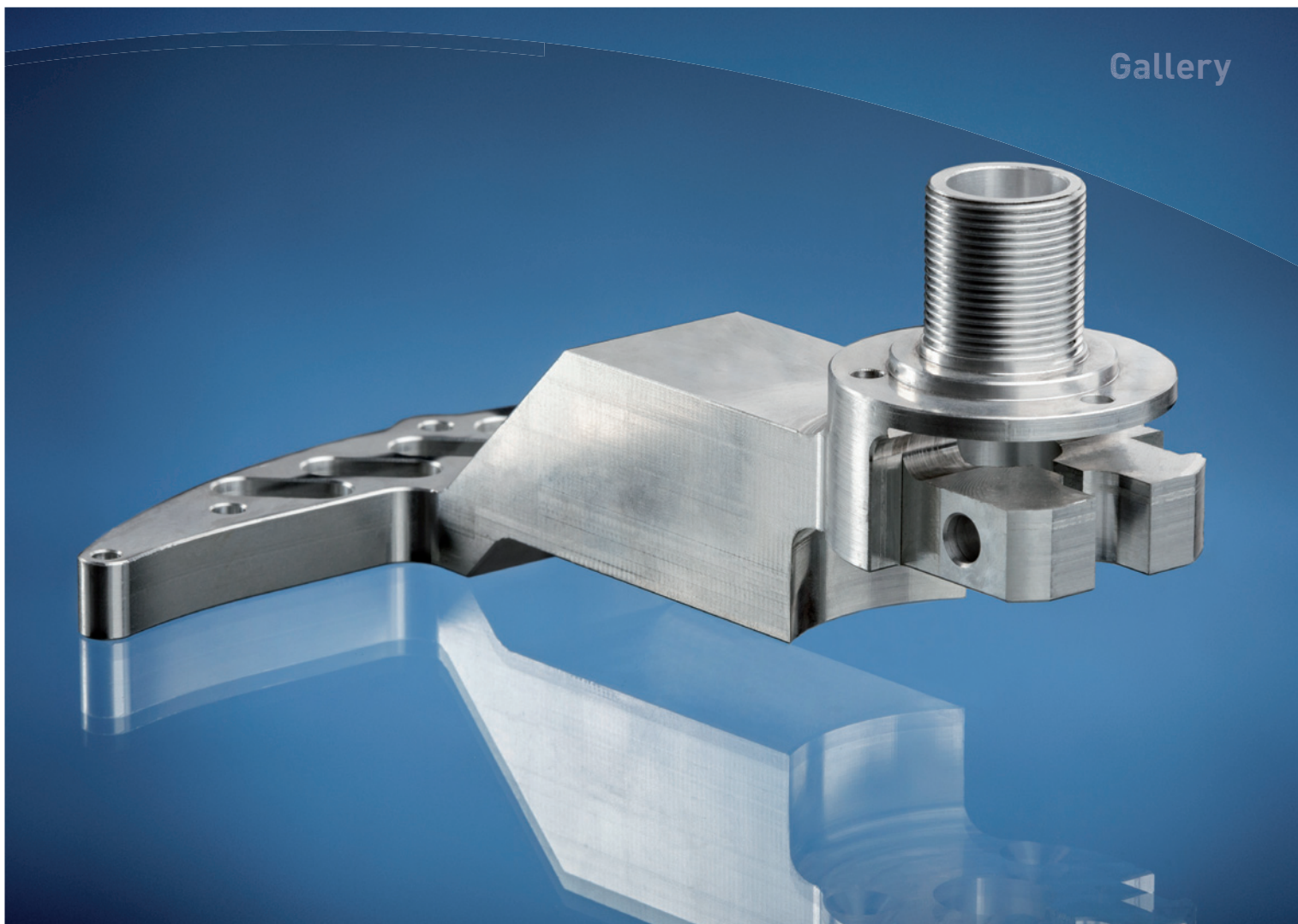
Water-cooled welder in protective atmosphere  
Steel, stainless steel, aluminium  
Max. loading 440 - 520A

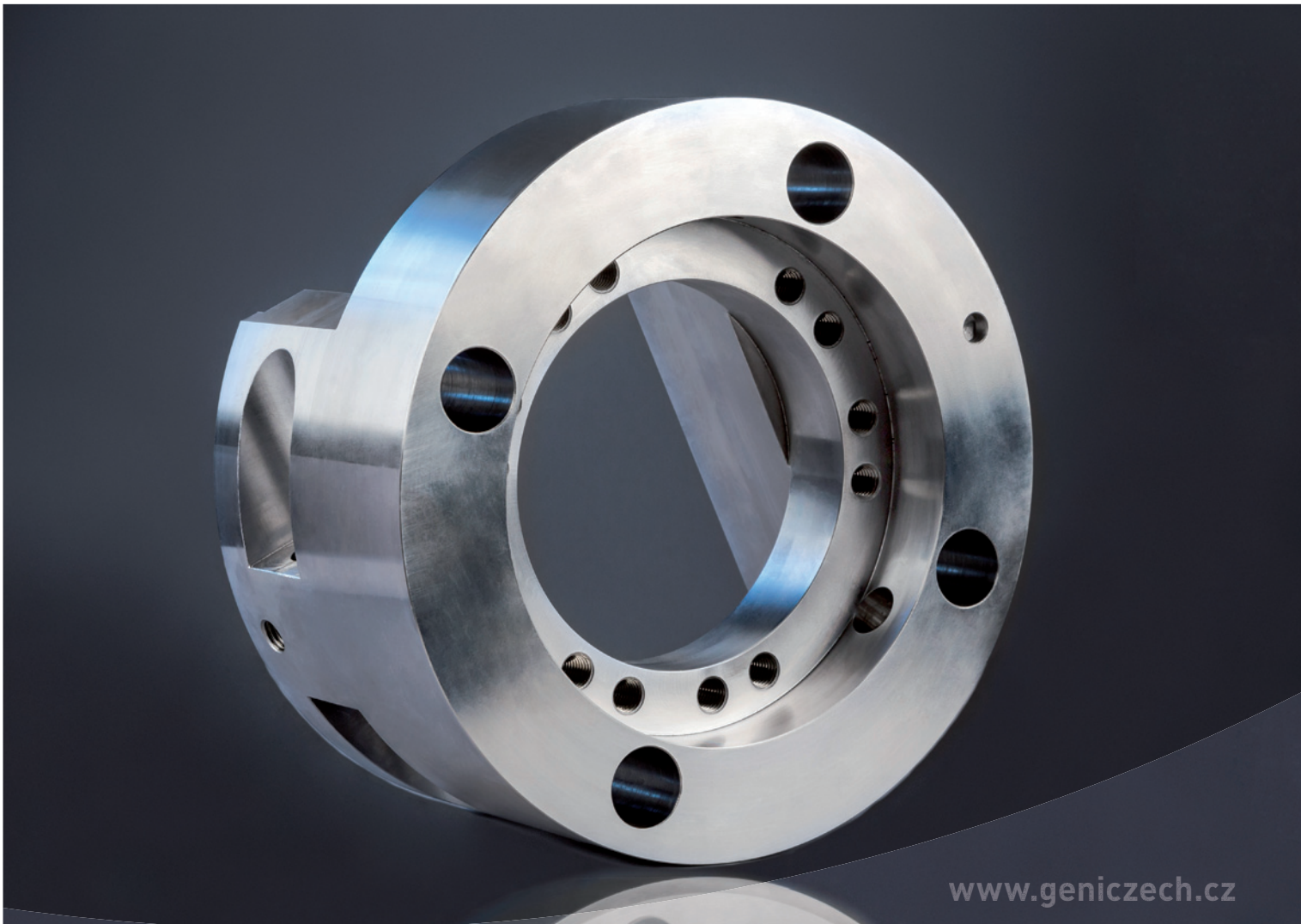
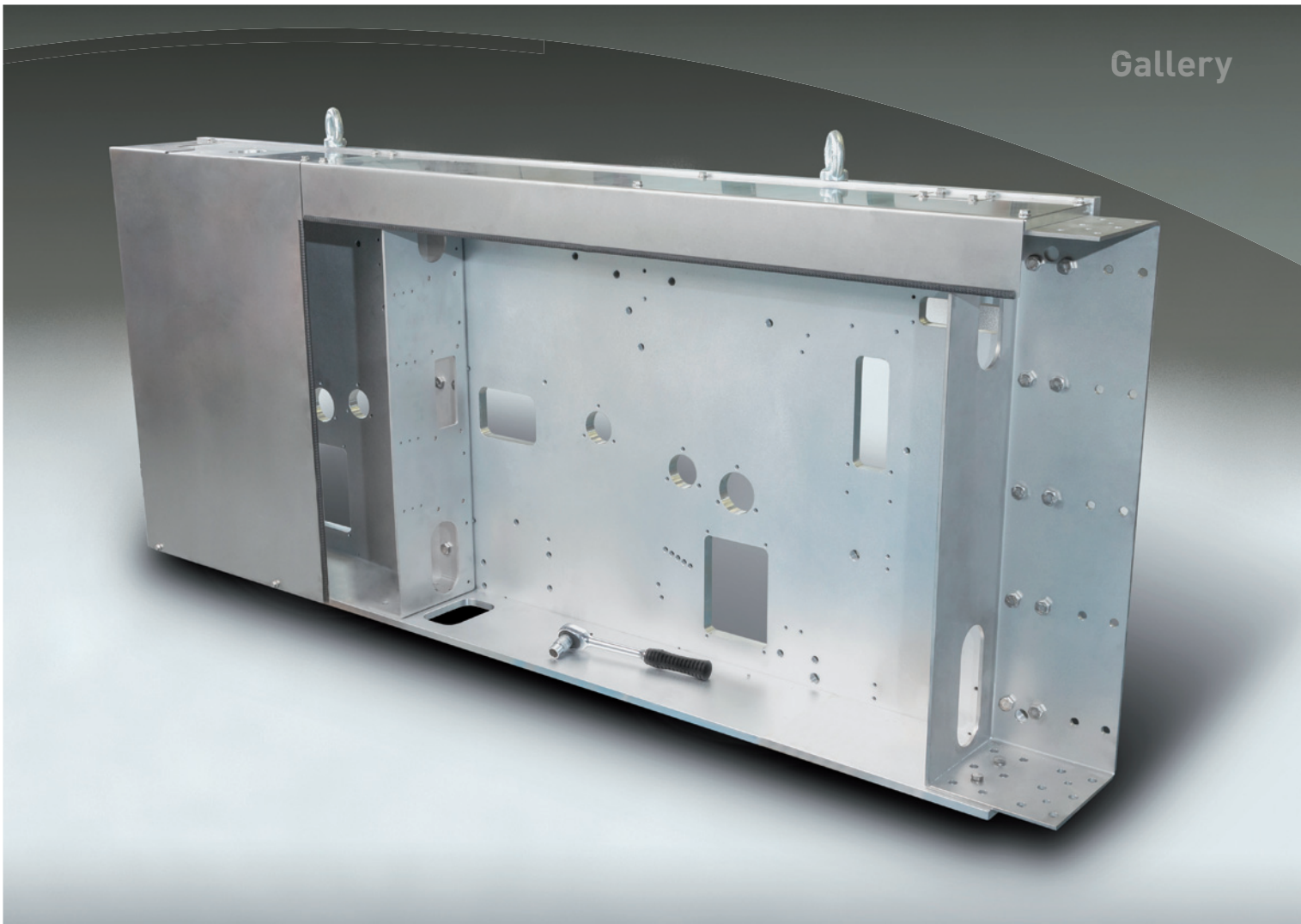
#### JASIC TIG 180 P (1pc)

With non-melting electrode, welding in protective atmosphere  
Steel, stainless steel, aluminium  
Max. loading 150 - 180A

#### GAMA 1550 (1pc)

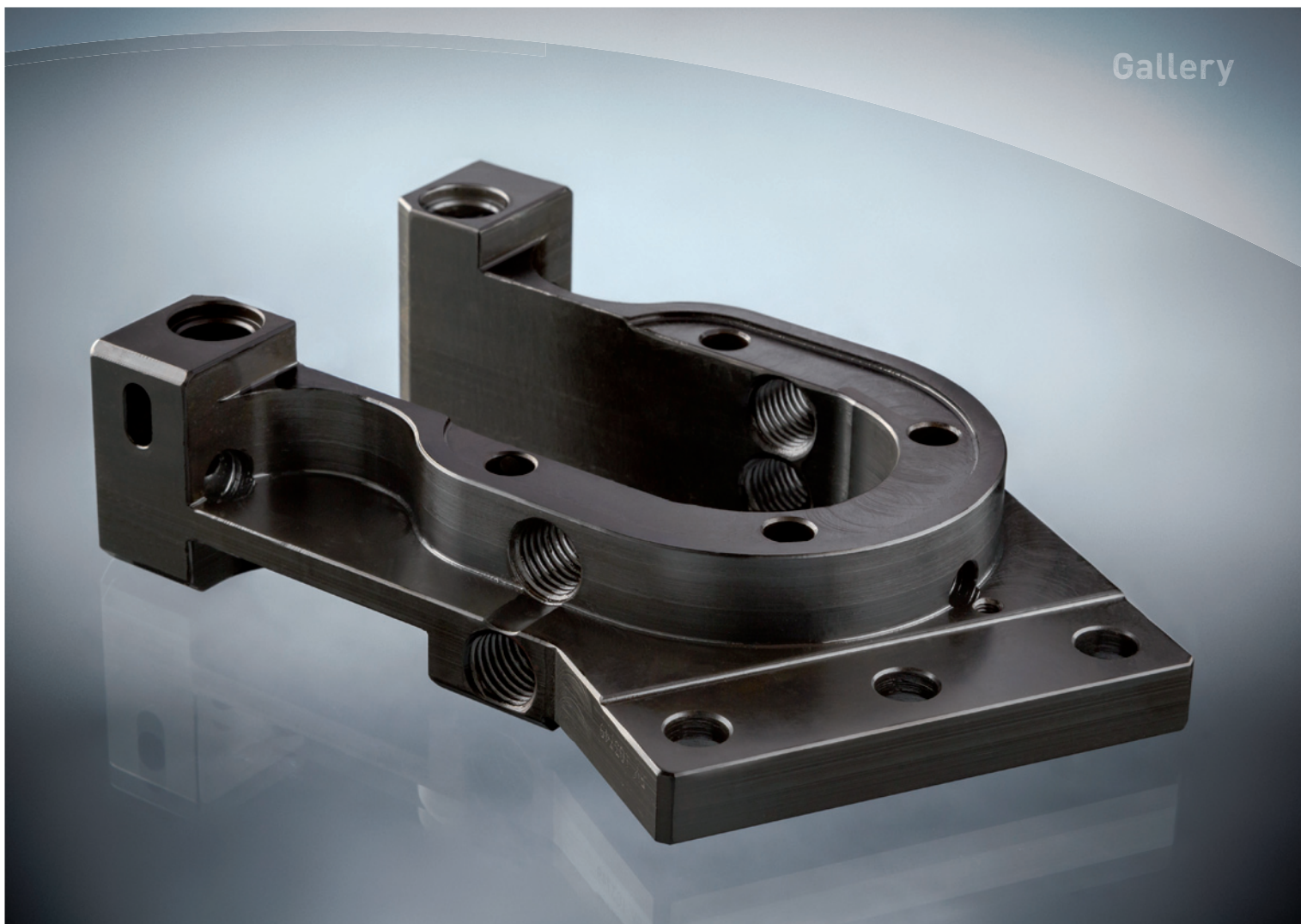
With melting electrode  
Max. loading 130 - 150A



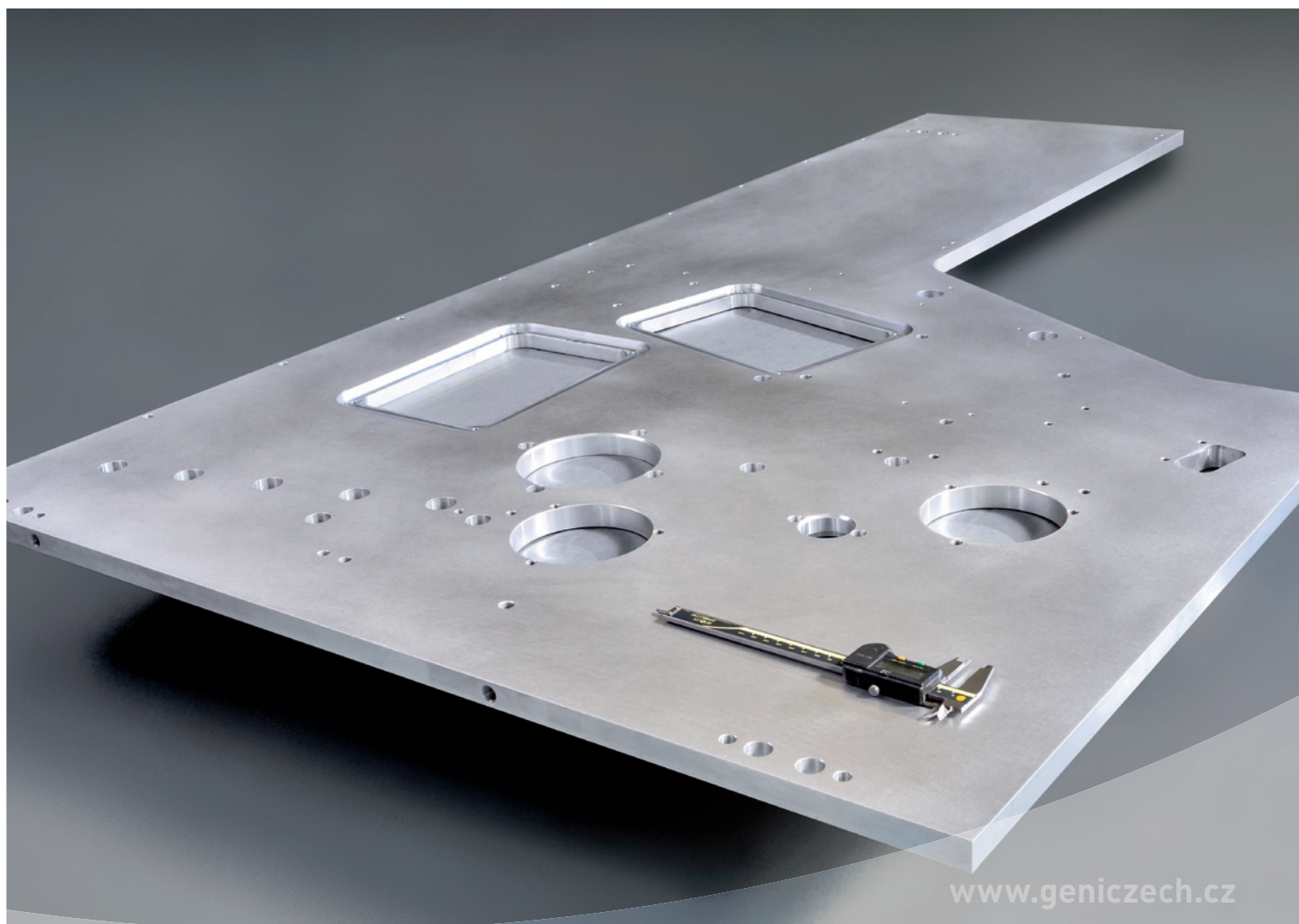
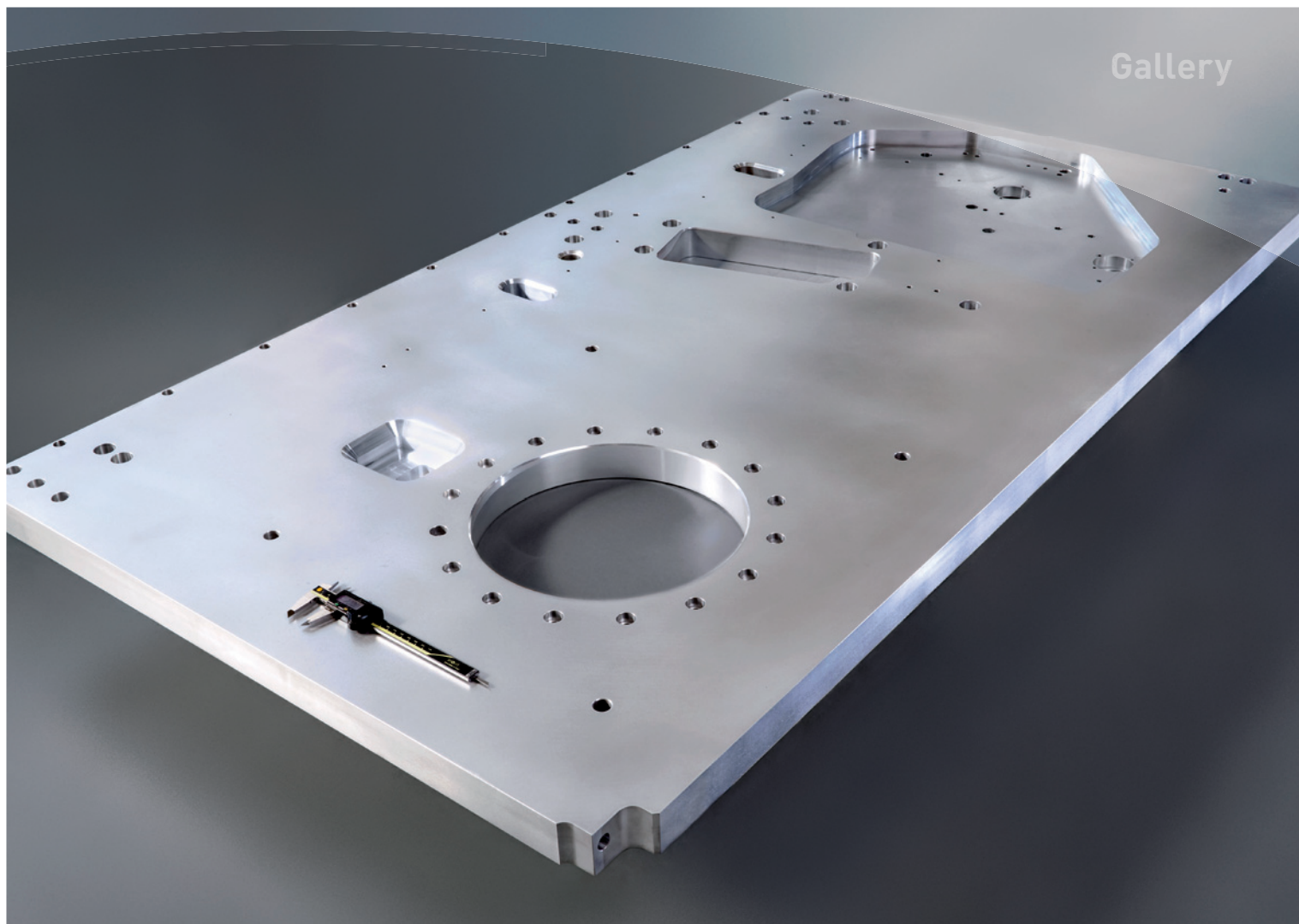




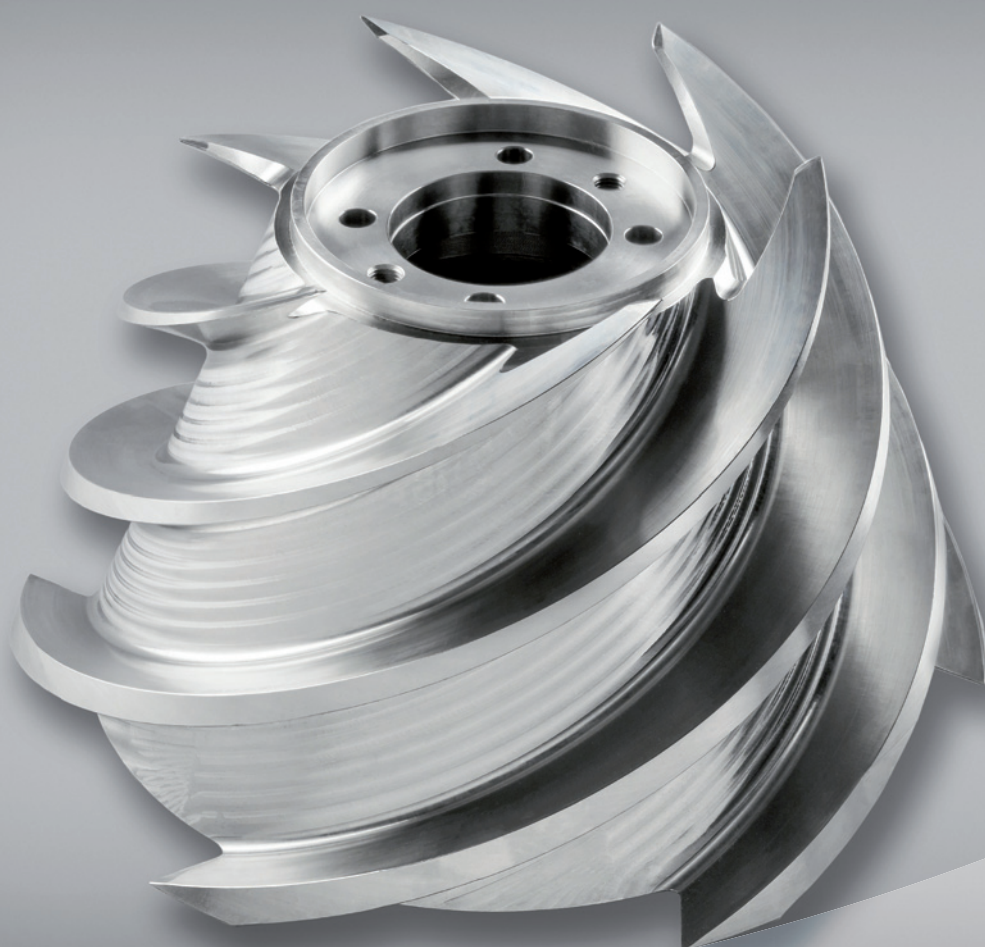
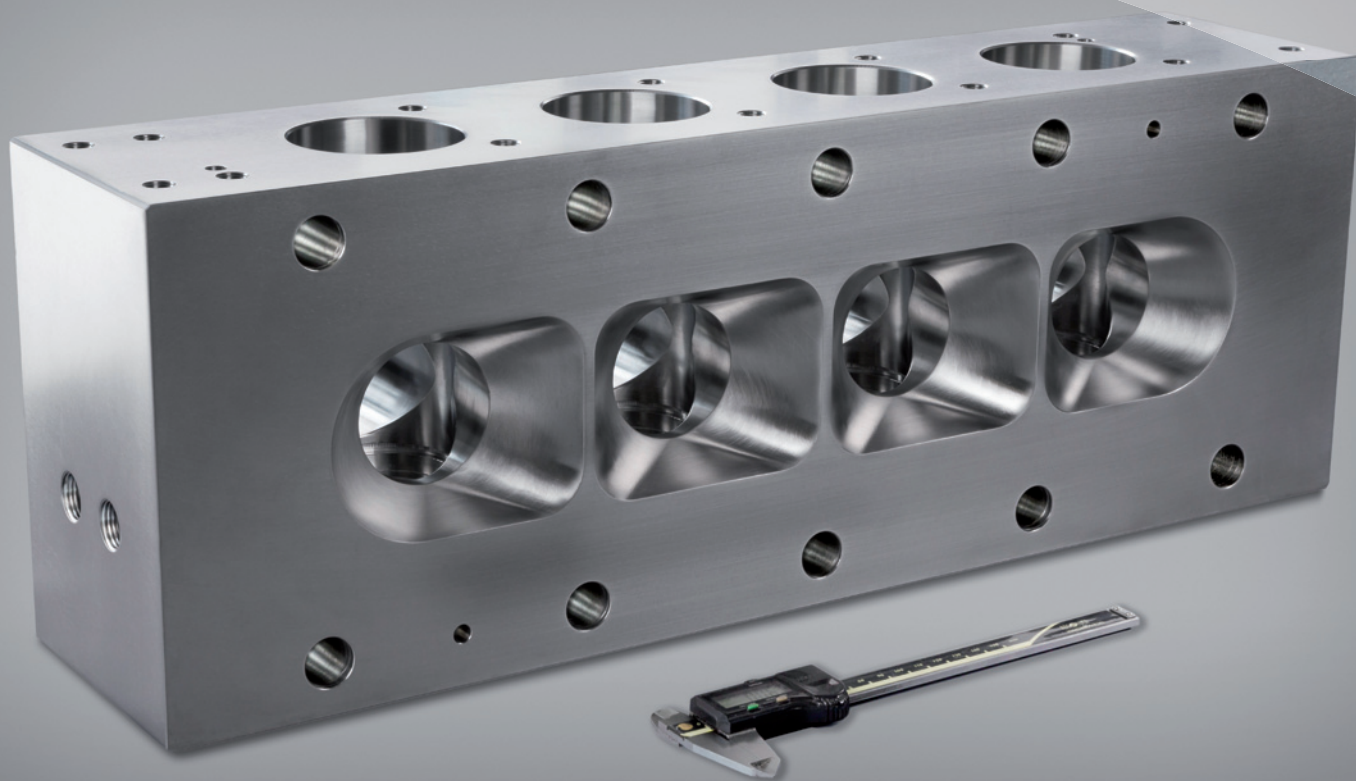
Gallery



[www.geniczech.cz](http://www.geniczech.cz)



Gallery



[www.geniczech.cz](http://www.geniczech.cz)